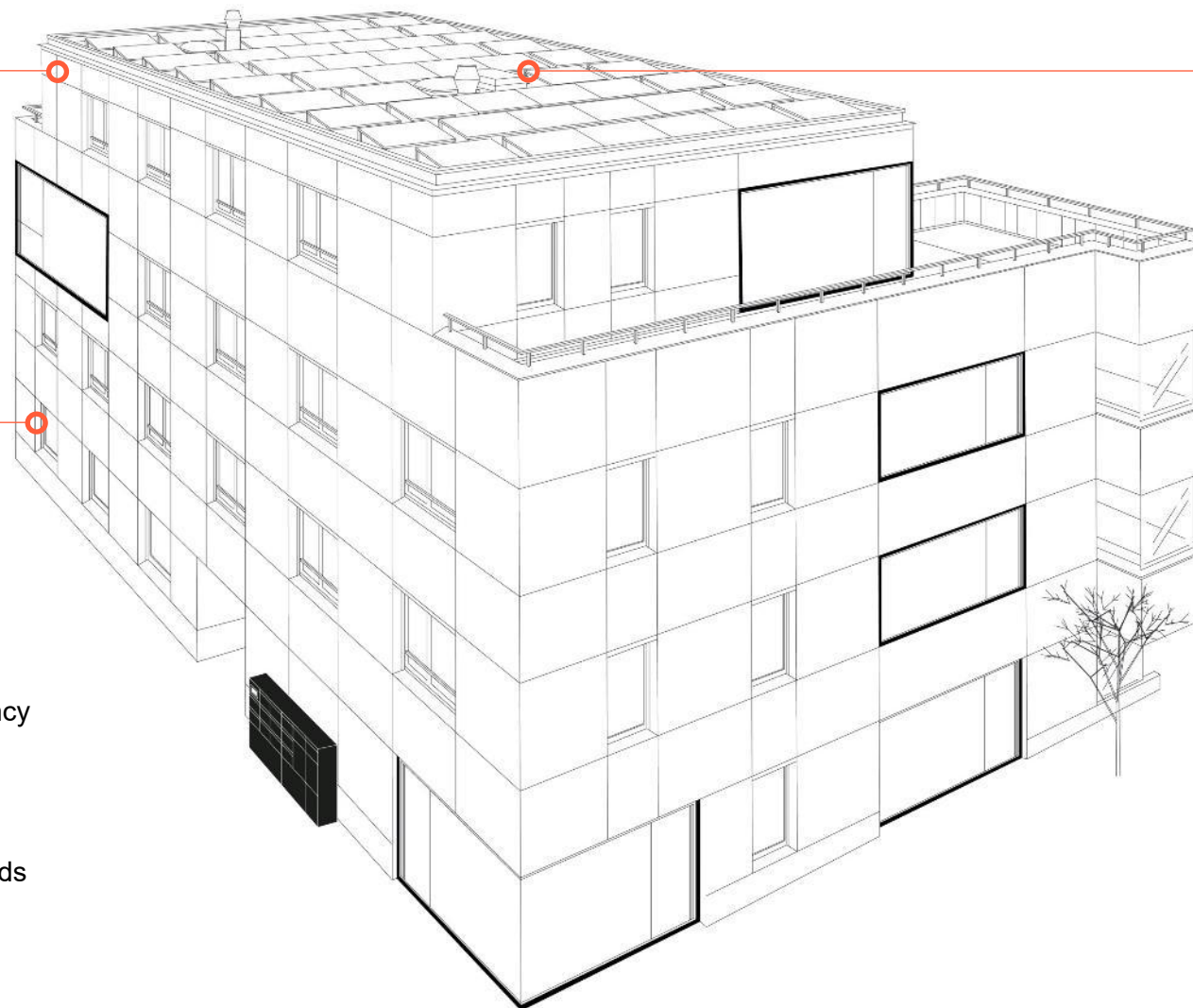


Schweizer's Guiding Principles

1 Mission, 3 Brand Values, 4 Core Competencies



Our Mission

Building today for tomorrow's generation.

Our Values

Quality

For over 100 years, we have ensured high-quality and aesthetically refined solutions.

Sustainability

Our products contribute to energy efficiency and are manufactured in a socially and environmentally responsible manner.

Innovation

We identify market opportunities and needs quickly and have been reinventing metalworking for over 100 years.

Our Core Competencies

Windows systems

With our wood/metal window systems for window manufacturers and our extensive aluminium product range, we offer comprehensive expertise in building envelopes.

Letter boxes and parcel boxes

Our letter boxes and parcel boxes enable modern logistics at your doorstep - 24/7 throughout Switzerland.

Solar systems

Schweizer solutions integrate future-oriented solar energy systems into buildings in an aesthetically pleasing way.

Metal and surface

Comprehensive expertise - also for contract work: sheet metal fabrication, surface treatment and powder coating from a single source.

Schweizer's Guiding Principles

- 1 Electricity-producing photovoltaic façade
- 2 windura classic wood/metal window system with French balcony
- 3 Slim aluminium sliding window duraslide vista
- 4 Letter boxes and parcel boxes
- 5 MSP rooftop PV mounting system
- 6 All-glass sliding wall vivofold
- 7 Sheet-metal windowshill

